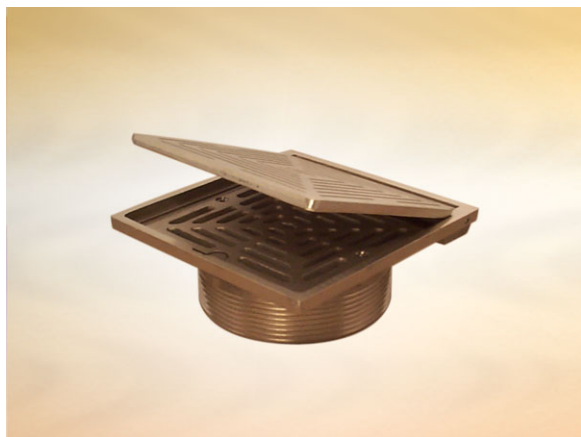


Product Details

L5301 Covered Grating

Technical Data



Dimensions:

150 square at finish level

55 - Overall Height

55 to 55 - Overall Height

Connection - 4" NPSM Vari-Level thread

Free Area - 44cm²

Materials - Nickel bronze

Load Rating Class - L15

Weight - 2.5 kg

General Description:

150 Square Nickel Bronze Vari-Level Covered Grating, for use with tiles, marble, terrazzo, resin etc. flooring (Grating concealed by solid hinged cover), with 4" NPSM dia. vertical outlet. Durable, superbly finished items particularly suited to a high volume of pedestrian traffic.

Options:

To specify an option, add option letter(s) as a suffix to the Spec. Code

H - fitted with Pin Torx screws for security applications

Materials:

Nickel Bronze - BS EN 1982: Used with satin finish for gratings, funnels and access covers. A cast alloy with a fine grain effect which blends well with most floor finishes. The satin finish is generally maintained by the slight abrasive action of passing traffic. In unused areas the material will gradually tarnish. To restore lustre, apply a plain nylon scouring pad (not soap-filled) in the direction of grain. **Note: Avoid covering nickel bronze items with plastic sheeting after installation, otherwise blackening may occur.**

All dimensions are in millimetres unless stated. In line with general practice all dimensions shown are nominal.

Wade International

Third Avenue, Halstead, Essex, CO9 2SX.

Telephone: +44 (0)1787 475151

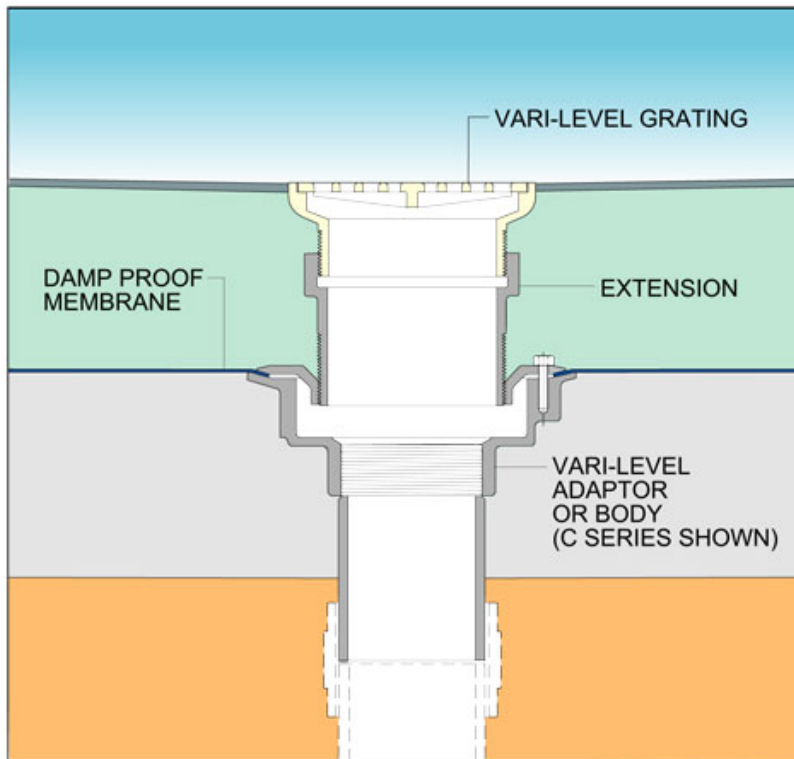
Fax: +44 (0)1787 475579

e-mail: wadetech@alumascwms.co.uk

website: <https://www.alumascwms.co.uk/brands/wade/>

Typical Installation for L5301:

Note: This illustration may show a similar Wade Product - it is intended to show the general installation type only.



Dimensioned Section for L5301:

